

CEL



COLLEGE OF ENGLISH LANGUAGE



CEL LOS ANGELES SANTA MONICA

HOUSING FACTSHEETS

623 ARIZONA AVENUE

SANTA MONICA CA 90401, USA

ADMISSIONS@ENGLISHCOLLEGE.COM

WWW.ENGLISHCOLLEGE.COM

HOUSING FACTSHEETS

CEL LOS ANGELES SANTA MONICA

	MEALS	MINIMUM AGE	ROOM TYPES	DISTANCE TO CEL	PRIVATE BATHROOM	DURATION	AMENITIES	PRICE PER WEEK
HOMESTAY	Breakfast or breakfast and dinner	16	Single Double	30 - 75 min. by public transportation	No	1+ weeks (2+ during high season)	-	FROM \$340
STUDENT HOUSE	Self-catering	18	Sleeping Pods	30 min. by public transportation	No	2+ weeks	Full kitchen, Fitness room, Jacuzzi, BBQ area, Yoga room	FROM \$385
SHARED APARTMENT ECONOMY	Self-catering	18	Single Twin	30 - 45 min. by public transportation	No	1+ weeks	Full kitchen	FROM \$340
SHARED APARTMENT STANDARD	Self-catering	18	Single Twin Quad	30 - 45 min. by public transportation	No	4+ weeks	Full kitchen	FROM \$250
SHARED APARTMENT COMFORT	Self-catering	18	Single Twin	10 minute walk	Yes	4+ weeks	Full kitchen	FROM \$525
CEL SHARED APARTMENT PREMIUM BEACH	Self-catering	18	Single Twin	25 minute walk	No	1+ weeks	Full kitchen, Pool, BBQ, Fitness center	FROM \$550
APARTMENT PREMIUM	Self-catering	18	Studio (max.2)	10 minute walk	Yes	3+ weeks	Full kitchen, small fitness room	FROM \$910

TWIN VS. DOUBLE ROOMS

- ✓ Double rooms can only be booked by two students travelling together
- ✓ Twin rooms can be booked by one person and they will share the room with a 2nd person (same gender)

GENERAL INFORMATION

- ✓ All accommodation types allow arrival and departure on Saturdays
- ✓ Extra nights are applicable when staying until Sunday (not available in Shared Apartments)
- ✓ A refundable security deposit needs to be paid upon check in. Credit card strongly recommended

TOP ACCOMMODATION OPTIONS MANAGED BY CEL

CEL takes pride in its unique approach to managing its residential accommodation, standing out from other institutions. We handle a significant portion of our accommodation services in-house, free from dependence on external suppliers. This operational model affords us:

Complete control over accommodation capacity, which allows us to:

- ✓ Confirm bookings without delay
- ✓ Instantly verify room availability
- ✓ Reserve spaces specifically for your students

Comprehensive oversight of our apartment operations, including:

- ✓ Total control over inventory
- ✓ An in-house cleaning team
- ✓ Dedicated accommodation websites that detail facilities and check-in procedures

This arrangement empowers us to provide you with top-tier service, and extends a broad spectrum of residential accommodation options to your clients. Many of our offerings are conveniently located within walking distance of the school and/or beach, and include amenities such as swimming pools, fitness centers, tennis courts, and jacuzzis. It's our commitment to ensure an exceptional living experience that compliments our world-class education.



★ Managed by CEL

CEL RESIDENCE STANDARD



CEL SHARED APARTMENT STANDARD



CEL SHARED APARTMENT COMFORT



CEL SHARED APARTMENT PREMIUM



CEL SHARED APARTMENT SUPERIOR



CEL SHARED APARTMENT PREMIUM BEACH





HOMESTAY

CEL LOS ANGELES SANTA MONICA

GENERAL INFORMATION

- ✓ Single and double rooms
- ✓ Breakfast or breakfast and dinner
- ✓ Most families offer free Wi-Fi
- ✓ Minimum duration: 1 week (2 weeks during high season)
- ✓ Minimum age: 16 years

CLEANING

- ✓ Linens and towels provided
- ✓ Laundry can be done at most homestays

LOCATION

- ✓ Different parts of Santa Monica & Los Angeles
- ✓ Average distance to CEL: 40 to 50 minutes by public transportation
- ✓ Maximum distance to CEL: 75 minutes by public transportation

ARRIVAL AND DEPARTURE

- ✓ Check-in: before 22:00
- ✓ No security deposit required

IDEAL FOR STUDENTS

- ✓ Who want to live with an American family
- ✓ Who want to practice English every day with native speakers
- ✓ Students under 18

FROM \$340 /WEEK



STUDENT HOUSE

CEL LOS ANGELES SANTA MONICA

GENERAL INFORMATION

- ✓ Bedrooms with sleeping pods
- ✓ Luxury hostel style accommodation
- ✓ Self-catering
- ✓ Minimum duration: 2 weeks
- ✓ Minimum age: 18 years

RESIDENCE COMPLEX

- ✓ Free Wi-Fi
- ✓ Large living room to share with other tenants
- ✓ Shared bathrooms
- ✓ Large fully equipped kitchen
- ✓ Rooftop terrace with BBQ
- ✓ Outdoor patio
- ✓ Fitness room
- ✓ Jacuzzi
- ✓ Yoga room
- ✓ Lockers available

CLEANING

- ✓ Daily (facilities only) during the week (Monday to Friday)
- ✓ Towels and linen are provided
- ✓ Shared laundry facilities (\$)

LOCATION

- ✓ Located in Venice
- ✓ 30 minutes by public transportation to CEL
- ✓ 20 minute walk to Venice Beach

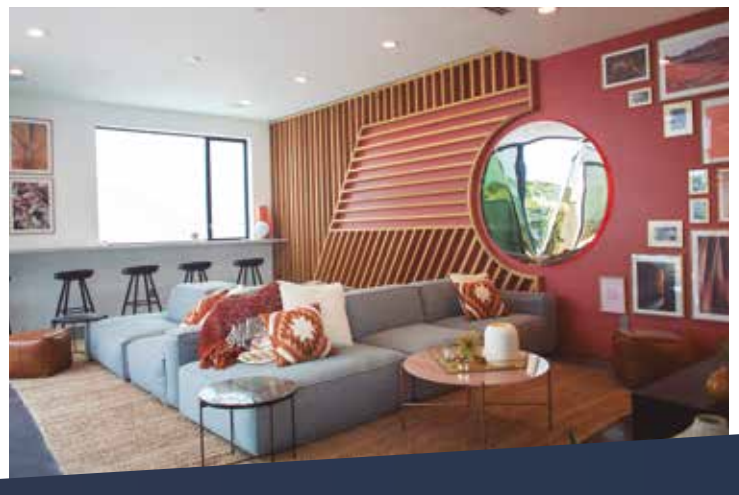
ARRIVAL AND DEPARTURE

- ✓ Check-in: after 16:00
- ✓ Check-out: before 11:00
- ✓ Refundable security deposit: \$500 (credit card recommended)

IDEAL FOR STUDENTS

- ✓ Who don't mind sleeping in a sleeping pod
- ✓ Who want to interact with other tenants as much as possible
- ✓ Who are looking for luxury facilities

FROM \$385/WEEK





SHARED APARTMENT ECONOMY

CEL LOS ANGELES SANTA MONICA

GENERAL INFORMATION

- ✓ Single and twin rooms
- ✓ Self catering
- ✓ Shared bathroom
- ✓ Minimum age: 18 years

APARTMENT AMENITIES

- ✓ Fully equipped kitchen
- ✓ Free Wi-Fi

CLEANING

- ✓ Cleaning of common areas provided every other week
- ✓ Linens and towels provided
- ✓ Laundry facilities in apartment (\$)

LOCATION

- ✓ Different parts of Los Angeles (e.g. Westwood)
- ✓ 30 - 45 minutes by public transportation to CEL

ARRIVAL AND DEPARTURE

- ✓ Check-in: 4pm - 10 pm (16:00 - 22:00)
- ✓ Check-out: before 11:00
- ✓ Refundable security deposit: \$500 (credit card recommended)

IDEAL FOR STUDENTS

- ✓ Who don't mind living in a very small room
- ✓ Who are looking for a more affordable housing option

FROM \$340/WEEK





SHARED APARTMENT STANDARD

CEL LOS ANGELES SANTA MONICA

GENERAL INFORMATION

- ✓ Single, twin and quad rooms
- ✓ Twin rooms can be booked by one person - students will be sharing the room with one or more people (same gender)
- ✓ Self-catering
- ✓ Minimum duration: 4 weeks
- ✓ Minimum age: 18 years

APARTMENT AMENITIES

- ✓ Fully equipped kitchen
- ✓ Living room
- ✓ Free Wi-Fi

CLEANING

- ✓ Cleaning of common areas provided every other week
- ✓ Linens and towels provided
- ✓ Laundry facilities in apartment (\$)

LOCATION

- ✓ Different parts of Los Angeles (e.g. Westwood)
- ✓ 30 - 45 minutes by public transportation to CEL

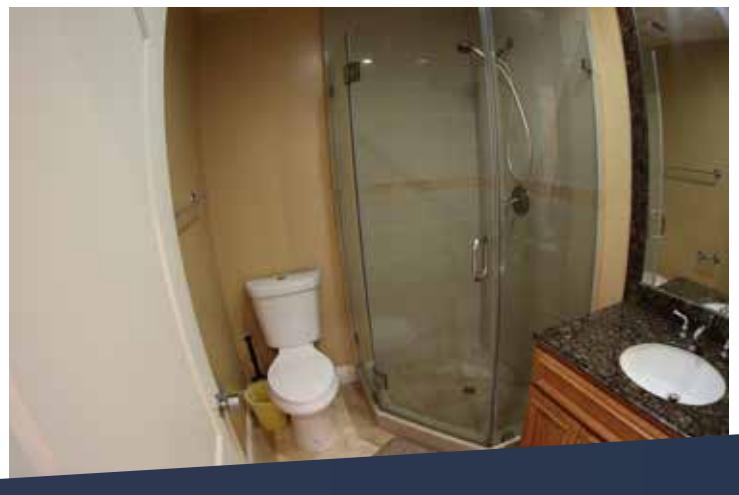
ARRIVAL AND DEPARTURE

- ✓ Check-in: Saturday after 14:00, Late check in fee of \$50 applies between 21:00 - 06:00
- ✓ Check-out: Saturday before 11:00
- ✓ Refundable security deposit: \$350 (credit card recommended)

IDEAL FOR STUDENTS

- ✓ Who want to share an apartment with other students
- ✓ Who want to live close to the school

FROM \$250/WEEK





SHARED APARTMENT COMFORT

CEL LOS ANGELES SANTA MONICA

GENERAL INFORMATION

- ✓ Single and twin rooms
- ✓ Twin rooms can be booked by one person – students will be sharing the room with another person (same gender)
- ✓ Self-catering
- ✓ Private bathroom per bedroom
- ✓ Minimum duration: 4 weeks
- ✓ Minimum age: 18 years

APARTMENT AMENITIES

- ✓ Each apartment has 2 bedrooms and 2 bathrooms
- ✓ Fully equipped kitchen with a dishwasher
- ✓ Air conditioned
- ✓ Living room, balcony, Smart TV with Netflix
- ✓ Free Wifi
- ✓ Carpet and vinyl floors throughout the apartment

CLEANING

- ✓ Cleaning provided every second week
- ✓ Linens and towels provided
- ✓ Laundry facilities in apartment (free of charge)

LOCATION

- ✓ Convenient location in Downtown Santa Monica close to the beach
- ✓ 10 minute walk to CEL
- ✓ Walking distance to grocery store, 3rd Street Promenade, Metroline, Public Library, and more

RESIDENCE COMPLEX

- ✓ Parking (currently available at: \$150 per month)

ARRIVAL AND DEPARTURE

- ✓ Check-in: Saturday after 14:00, Late check in fee of \$50 applies between 21:00 - 06:00
- ✓ Check-out: Saturday before 11:00
- ✓ Refundable security deposit: \$350 (credit card recommended)

IDEAL FOR STUDENTS

- ✓ Who want to experience the fun, beach lifestyle and convenience of living in Downtown Santa Monica
- ✓ Who want to be able to walk to CEL
- ✓ Who want to share an apartment with other students

FROM \$525 /WEEK





★ Managed by CEL

CEL SHARED APARTMENT PREMIUM BEACH

CEL LOS ANGELES SANTA MONICA

GENERAL INFORMATION

- ✓ Single and twin rooms
- ✓ Twin room can be booked by one person - students will be sharing the room with another person (same gender)
- ✓ Self-catering
- ✓ Shared bathroom
- ✓ Minimum duration: 1 week
- ✓ Minimum age: 18 years

APARTMENT AMENITIES

- ✓ Each apartment has 2 bedrooms and 1.5 bathrooms
- ✓ Fully equipped kitchen with a dishwasher
- ✓ Small rooftop terrace
- ✓ Air conditioned
- ✓ Living room, balcony, Smart TV with Netflix
- ✓ Free Wifi

RESIDENCE COMPLEX

- ✓ Swimming pool
- ✓ BBQ area
- ✓ Fitness center
- ✓ Parking (\$)

LOCATION

- ✓ Amazing location in Downtown Santa Monica close to the beach
- ✓ 5-minute walk to the beach
- ✓ 10-minute walk to Santa Monica Pier
- ✓ 25-minute walk to CEL
- ✓ Walking distance to grocery store, 3rd Street Promenade, Metroline, Public Library, and more

CLEANING

- ✓ Cleaning provided every week
- ✓ Linens and towels provided
- ✓ Washer & dryer in the apartment

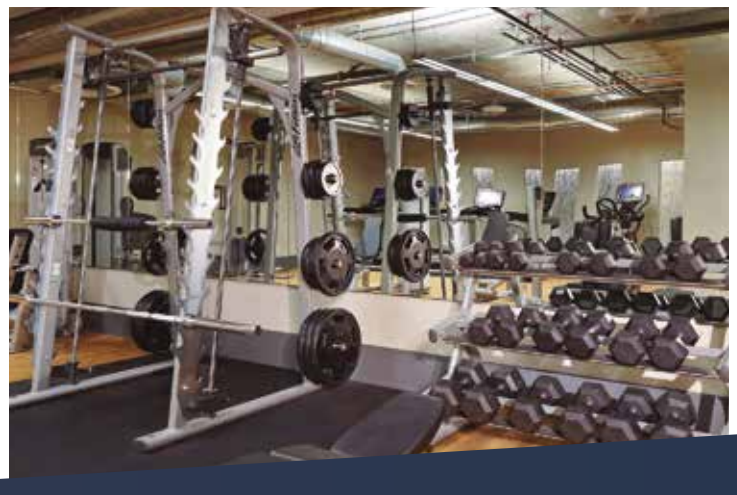
ARRIVAL AND DEPARTURE

- ✓ Check-in: Saturday after 16:00
- ✓ Check-out: Saturday before 11:00
- ✓ Refundable security deposit: \$500 (credit card recommended)

IDEAL FOR STUDENTS

- ✓ Who want to live in a top notch apartment managed by CEL
- ✓ Who want to live super close to the beach
- ✓ Who want to benefit from a location in the heart of Santa Monica

FROM \$550 /WEEK





APARTMENT PREMIUM

CEL LOS ANGELES SANTA MONICA

GENERAL INFORMATION

- ✓ Studio (max. 2 people)
- ✓ Self-catering
- ✓ Queen size bed (not available with 2 twin beds)
- ✓ Private bathroom
- ✓ Minimum duration: 3 weeks
- ✓ Minimum age: 18 years

APARTMENT AMENITIES

- ✓ Fully equipped kitchen with dishwasher
- ✓ Air conditioned
- ✓ Free Wi-Fi
- ✓ Cable TV

CLEANING

- ✓ Cleaning available upon request (\$)
- ✓ Linens and towels provided
- ✓ Shared laundry facilities (\$)

LOCATION

- ✓ Great location in Downtown Santa Monica
- ✓ 10 minute walk to CEL
- ✓ 15 minute walk to the beach

RESIDENCE COMPLEX

- ✓ Small fitness room
- ✓ Parking (available upon request \$)

ARRIVAL AND DEPARTURE

- ✓ Check-in: after 12:00
- ✓ Check-out: before 11:00
- ✓ Keys are available in the lock-box after 12:00 PM. Lock-Box information will be provided prior to arrival
- ✓ No security deposit required

IDEAL FOR STUDENTS

- ✓ Who want to be walking distance from the school
- ✓ Who prefer a private apartment
- ✓ Who want to stay in the heart of Downtown Santa Monica
- ✓ Who want to be walking distance to the beach

FROM \$910 /WEEK

